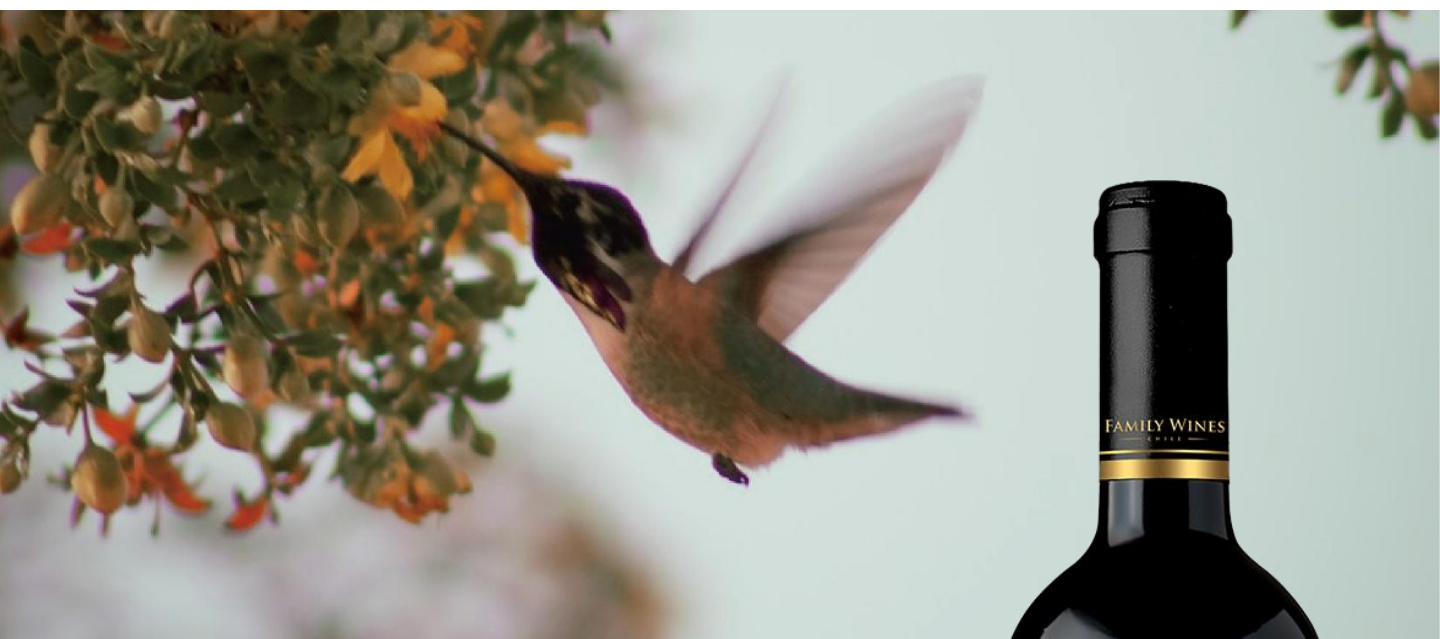


SANTA LOMA[®]



Grape variety : Cabernet Sauvignon

Production area : Central Valley

Range : Varietal

Country of origin : Chile

Wine type : Dry

Suitable temperature : 16 - 18°C

Net content : 750ml

Tasting Notes:

Appearance: Ruby red colour, bright, red highlights.

Nose: Intense strawberry and raspberry nose with A hint of cacao.

In mouth: Pleasant and lively mouth entry; medium bodied, with well-blended tannins in the finish.

Pairing recommendation: All kinds of red meat with rich sauce and ripe cheese.

Production Area :

Let yourself be enchanted by the magic of Chile's Central Valley in this captivating Cabernet Sauvignon. The region's enchanting landscape and climatic rhythm infuse the grapes with a beguiling charm, delivering a wine that entices with its alluring blend of ripe fruit and invigorating acidity.

